

市政/矿山工程装备

粉碎钳 Hydraulic Pulverizer

适用对象: 分离钢筋混凝土等破拆作业。
 主要特点: 采用瑞典Hardox 500钢材, 质量轻、耐磨;
 销轴采用42CrMo合金钢, 强度高、韧性好;
 旋转式采用瑞士进口旋转马达;
 油缸采用珩磨管, 进口HALLITE油封, 寿命长;
 刀块采用耐磨合金钢, 抗高温、耐变形。

Applicable objects: Demolition operations such as separating reinforced concrete.
 Main features: Made of Swedish Hardox 500 steel, lightweight and wear-resistant;
 The pin is made of 42CrMo alloy steel with high strength and toughness;
 Rotary type uses Swiss imported rotary motor;
 Oil cylinder adopts honing tube, imported HALLITE oil seal, long life;
 The knife block is made of wear-resistant alloy steel, which is resistant to high temperature and deformation.



固定式粉碎钳
Hydraulic Pulverizer

旋转大力粉碎钳
heavy crushing shear

旋转式粉碎钳
Rotating Pulverizer



项目/型号 Item/Model	单位 Unit	JSH150P	JSH250P
适用挖掘机 Suitable Excavator	ton	15	18-24
重量 Weight	kg	800	1350
开口 Opening	mm	570	750
深度 Depth	mm	630	786
高度 Height	mm	960	1199
宽度 Width	mm	600	740
长度 Length	mm	1520	1942
额定压力 Rated Pressure	kg/cm ²	300	320
额定流量 Rated Flow	L/min	220	240
粉碎力 Crushing Force	中央 Middle	40	55
	尖端 Tip	65	80
周期 Cycle Time	张开 Open	2.8	2.2
	闭合 Close	3.2	2.5

市政/矿山工程装备

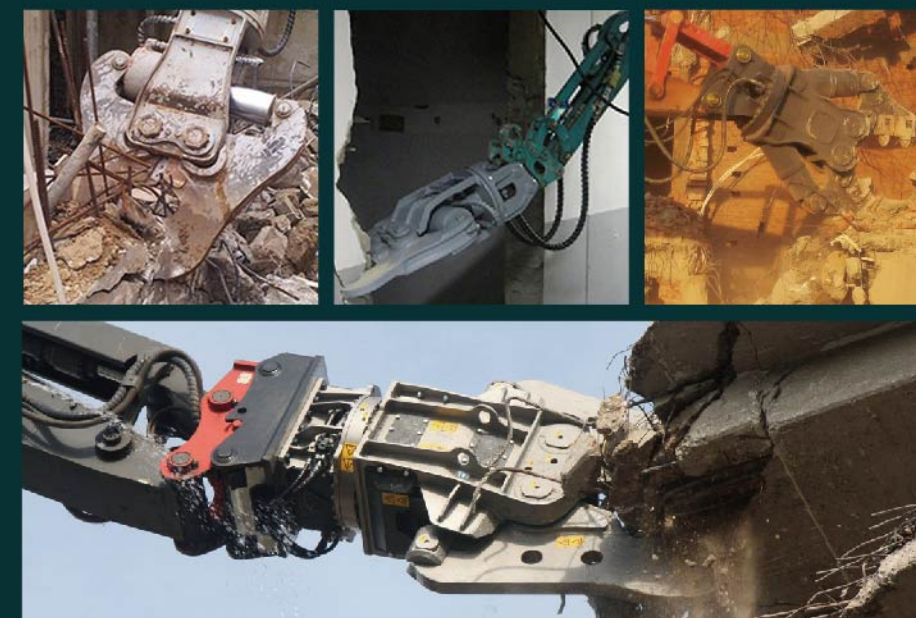
高空液压剪 Multi Crusher/Multi Shear

适用对象: 楼房拆除、钢材剪切等破碎、剪切作业。
 主要特点: 采用瑞典Hardox 500钢材, 质量轻、耐磨;
 销轴采用42CrMo合金钢, 强度高、韧性好;
 旋转马达采用瑞士进口马达, 全角度旋转;
 油缸采用珩磨管, 进口HALLITE油封, 工作周期短、寿命长;
 刀块采用耐磨合金钢, 抗高温、耐变形。

Applicable objects: crushing and shearing operations such as building demolition and steel shearing.
 Main features: Made of Swedish Hardox 500 steel, lightweight and wear-resistant;
 The pin is made of 42CrMo alloy steel, with built-in oil passage, high strength and good toughness;
 Rotary motor adopts Swiss imported motor, full-angle rotation;
 The oil cylinder adopts honing tube, imported HALLITE oil seal, short working cycle and long life;
 The knife block is made of wear-resistant alloy steel, which is resistant to high temperature and deformation.



双缸液压剪
Double-cylinder Shear



单缸小型液压剪A
Single-cylinder Shear

项目/型号 Item/Model	单位 Unit	小型液压剪				高空液压剪		
		JSMS20	JSMS30	JSM50	JSM55	JS10V	JS15V	JS20V
适用挖掘机 Suitable Excavator	ton	1.5-3.0	3.0-4.0	4.0-5.5	5.5-6.0	6-9	10-17	18-24
重量 Weight	kg	200	340	380	440	550	1280	2000
开口 Opening	mm	190	290	290	290	580	650	810
刀片长度 Blade Length	mm	-	-	-	-	120	150	180
高度 Height	mm	1055	1290	1400	1400	1500	1890	2120
宽度 Width	mm	-	-	-	-	780	1285	1500
粉碎力 Crushing Force	ton	18	25	32	36	60	80	120
剪切力 Cutting Force	ton	22	35	38.5	38.5	85	165	260
额定压力 Rated Pressure	kg/cm ²	210	210	210	210	300	300	320
额定流量 Rated Pressure	L/min	-	-	-	-	180	230	240
工作压力 Operating Pressure	kg/cm ²	-	-	-	-	260	280	300
周期 Cycle Time	张开 Open	-	-	-	-	1.8	2.1	2.9
	闭合 Close	-	-	-	-	1.7	2.3	2.7